

# WOODSON ACRES

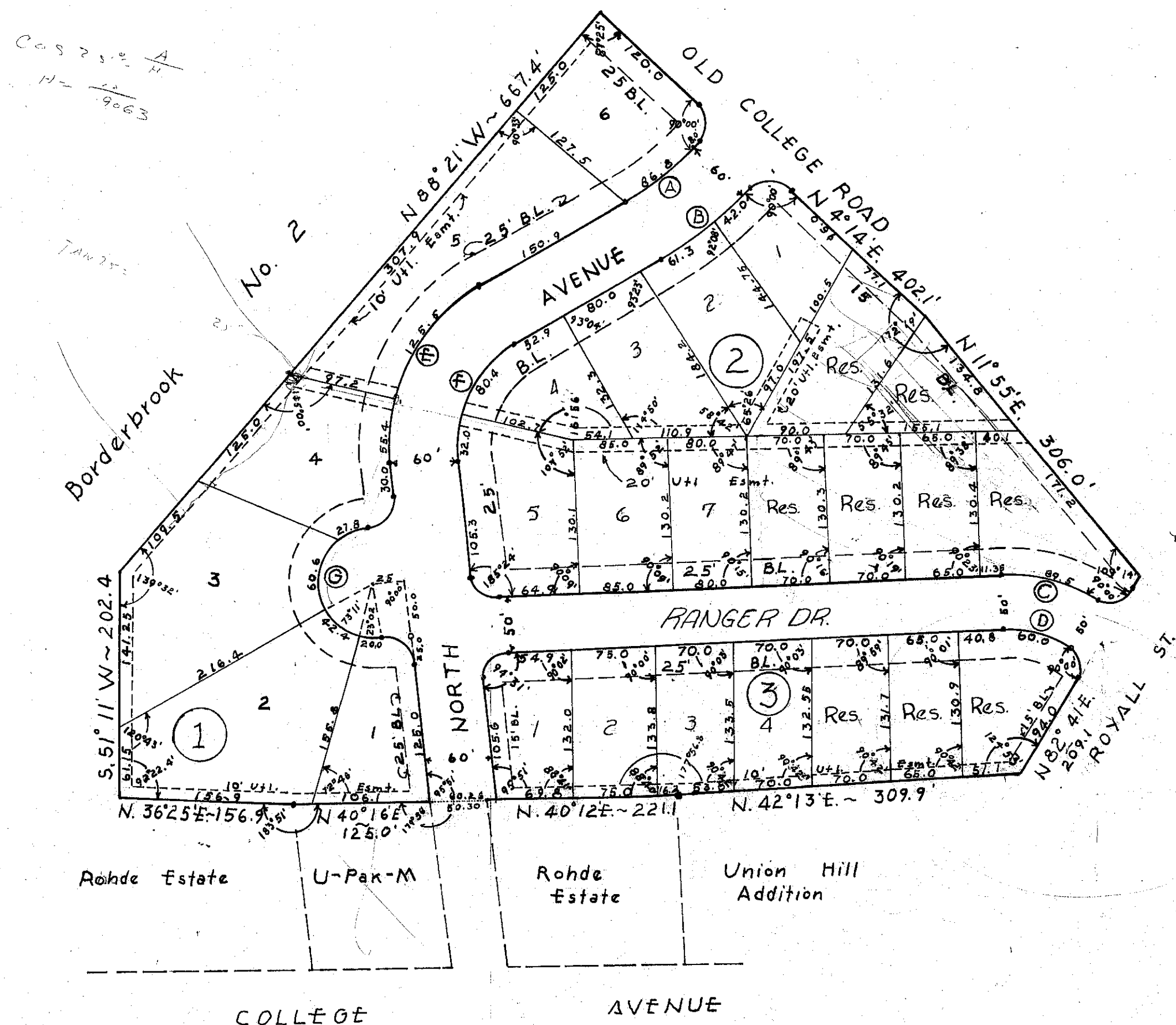
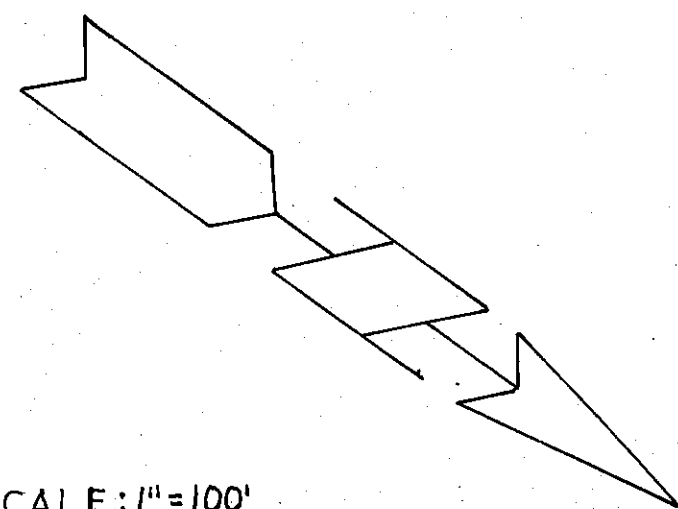
Subdivision of the Rohde Estate  
 M. G. Perkins - Developer  
 BRYAN, TEXAS 1957  
 D.R.: VOL. 189, PG. 55 (RECORDED APR. 25, 1958)

00  
 82  
 126  
 30  
 14

CURVE DATA					
CURVE	A	D	T	L	R
(A)	16°23'	18°52'	43.5'	86.8'	305.0'
(B)	16°23'	15°45'	52.0'	104.0'	365.0'
(C)	34°08.6'		46.8'		
(D)	34°08.6'		31.45'		
(E)	66°37'	36°41'	104.4'	181.6'	158.9'
(F)	66°37'	60°44'	65.0'	109.7'	98.9'
(G)					50.0

NOTE: All distances along curves are chord distances.  
 All radii at street intersections are 25.0'

SCALE: 1"=100'



379